



happy place

created by chris bennett

COMEDY! SCIENCE! PHILOSOPHY! BREAKFAST!

Happy Place is an animated series for the Dropout Audience.

It's smart, but silly. Funny, but deep. Colourful, but dark.

A breakfast cereal mascot and her fridge embark on a quest to bring an end to unhappiness once and for all!

Characters we'd want to be best friends with
set in a world we'd love to visit
where all kinds of funny and memorable stories can be told.



The universe is really, really big (and probably even bigger than that). And though it may seem mostly empty, it is quite literally filled with questions.

Answers seldom come, and even when one is discovered the universe effortlessly provides a dozen new questions in its' place.

In relatable terms, the universe is like a huge mysterious taco wrapped in an enigmatic burrito, deep fried into an escape-room chimichanga and served with some very questionable fries.

It all started at the Notorious B.I.G. bang, where, in the tiniest fraction of a second, the fundamental laws of existence were established. Gravity. The speed of light. Squirrels, and such.

Basically, if existence were a board-game, the Big Bang wrote the rulebook.

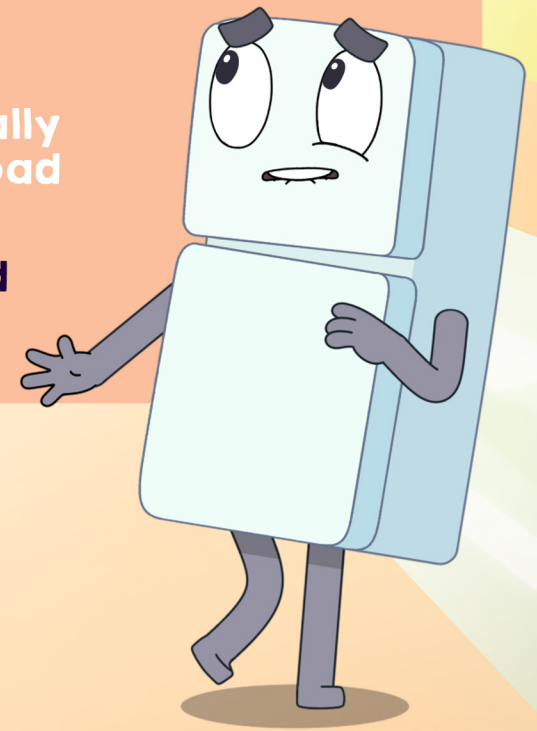
But what if the rulebook didn't say anything about un-happiness?

What if there was no such thing as sadness, anger, or resentment, and happiness ran unopposed on a peaceful and perfect world?

Indeed, such a planet would be a very *HAPPY Place!*

This is all great until - oh, crap! - Bailey and Fridge accidentally break the universe and unleash all the negative vibes and bad joo-joo into existance!

Now it's up to them to try and fix the world and make everything happy once again! Simple, right?



Bailey

A 20-something red koala, Bailey is the hugely popular mascot for the best breakfast cereal in the world - Super Fruity Happy Crunch!

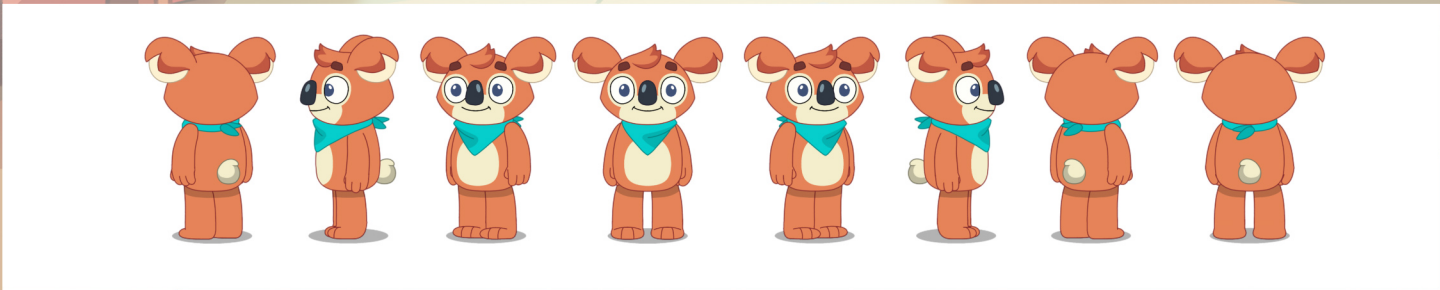
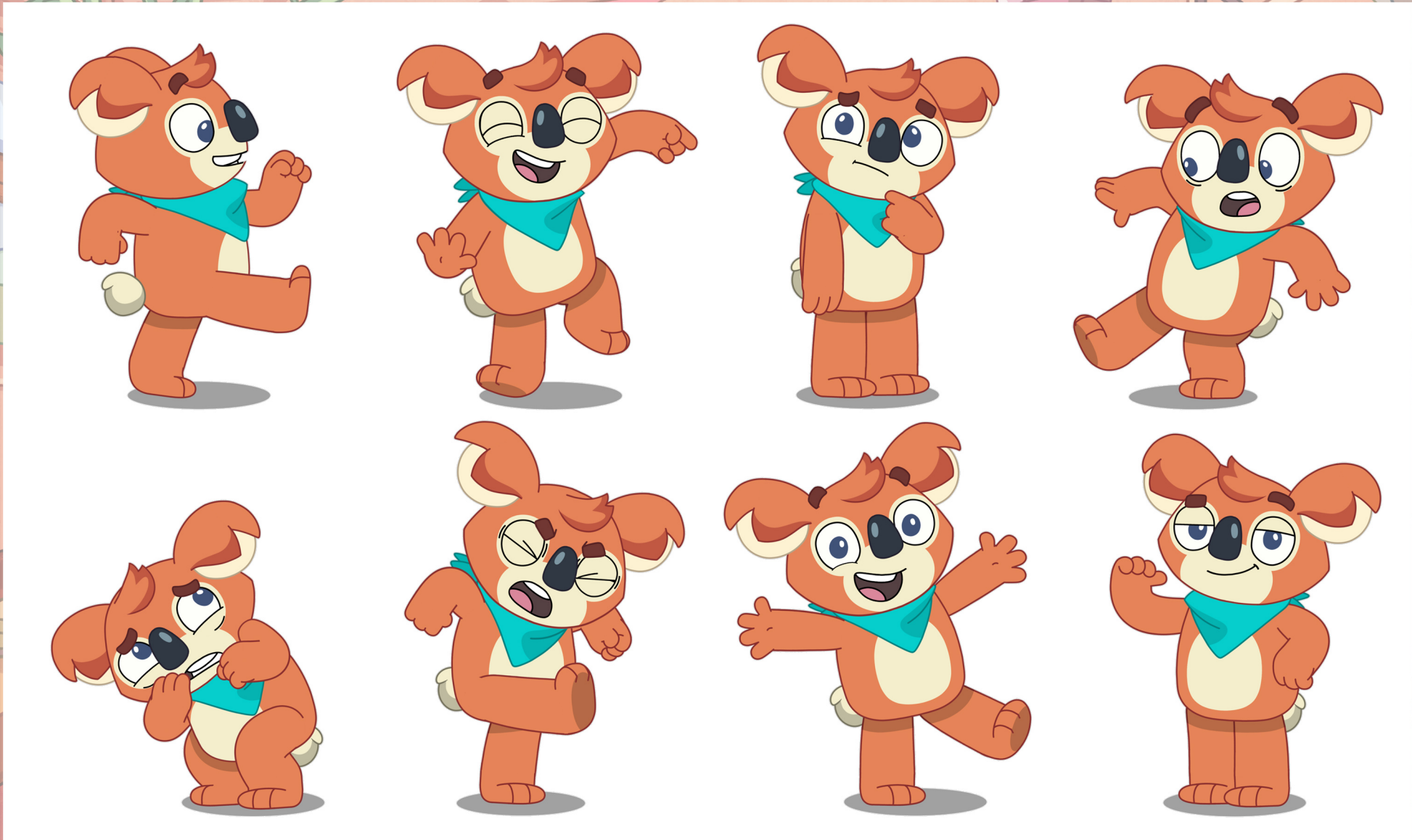
She is kind, curious, and endlessly determined. A loyal friend and enthusiastic employee of the cereal company.



She even has special powers!... kinda. Her abilities are limited to what you might expect to see from a breakfast cereal mascot in a commercial - her nose can light up like a rainbow and she can wave sugar sparkles from her fingertips.

Bailey has enjoyed her life of smooth sailing, but after she accidentally breaks the universe her life is thrown upside down.

Bailey has a lot to learn about her new, wider spectrum of emotion - and through her fresh set of eyes, we the audience can learn something too.



Fridge

Laidback and easy-going, Fridgerald (aka Fridge) is pretty chill.

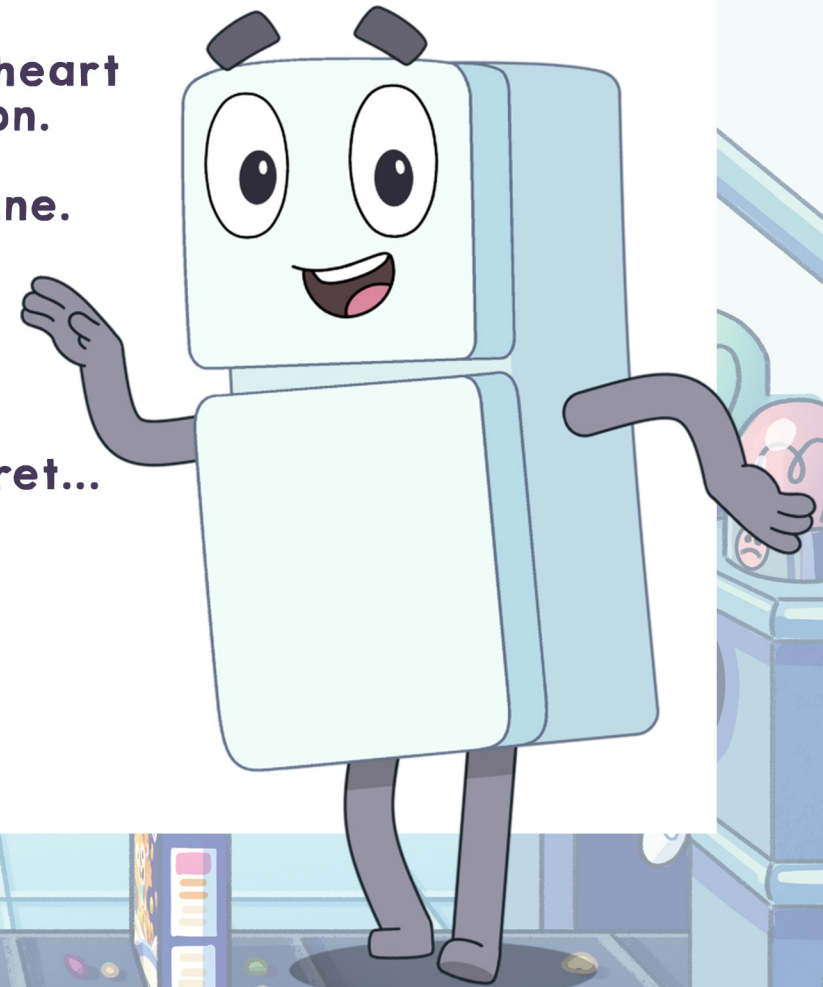
He's not the brightest bulb, but Fridge has a huge heart and is ready for a serious thing with the right person.

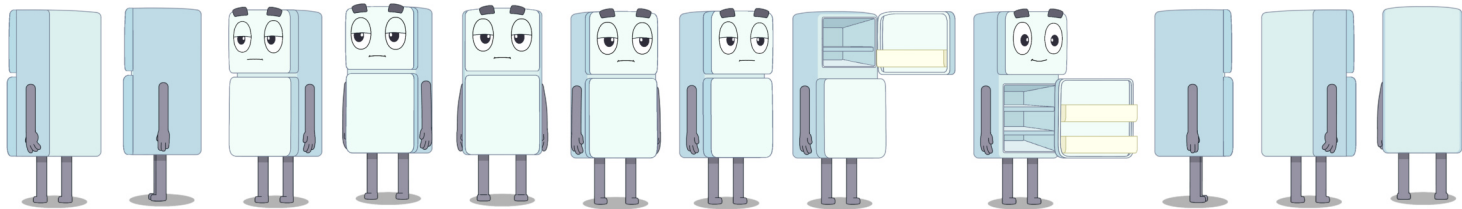
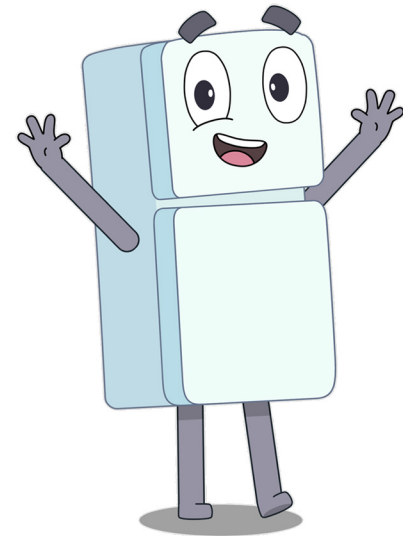
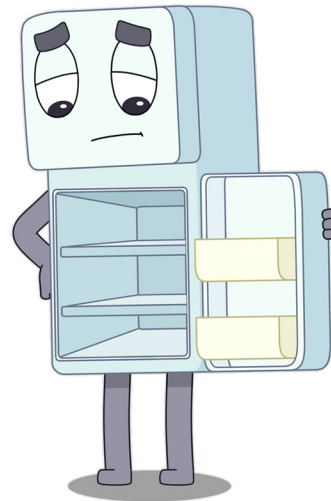
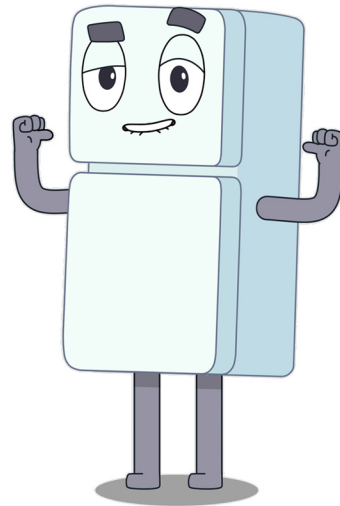
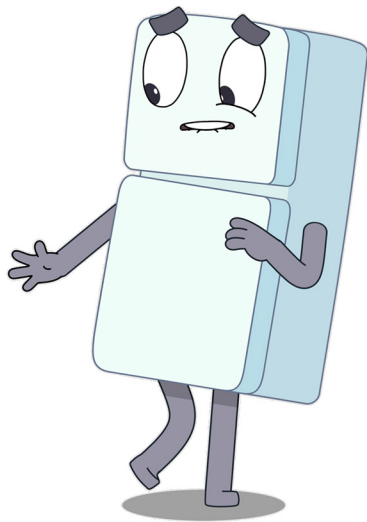
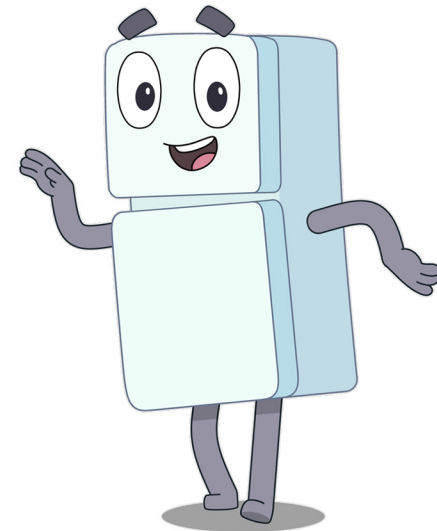
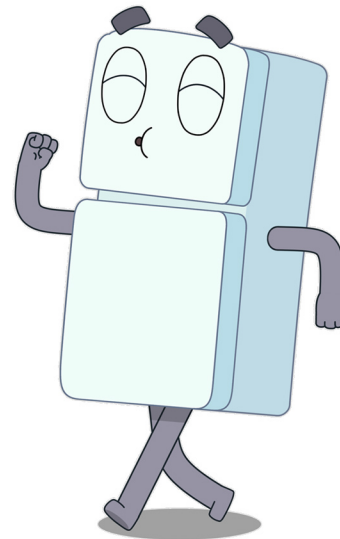
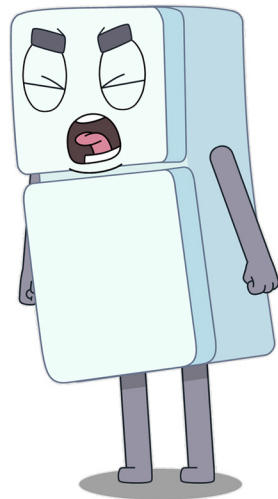
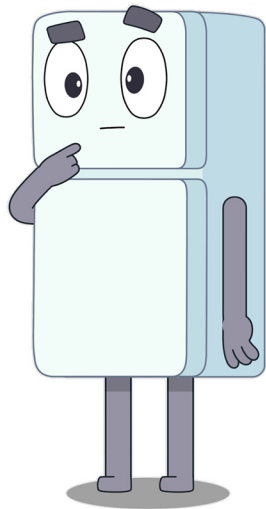
He's hoping that person is Melba the vending machine.

But 'love' just became far more complex, so Fridge has a lot of new emotions to navigate.

Fridge and Bailey are ride or die BFF's, but can their friendship survive their terrible, terrible secret...

...they kinda' broke the universe!







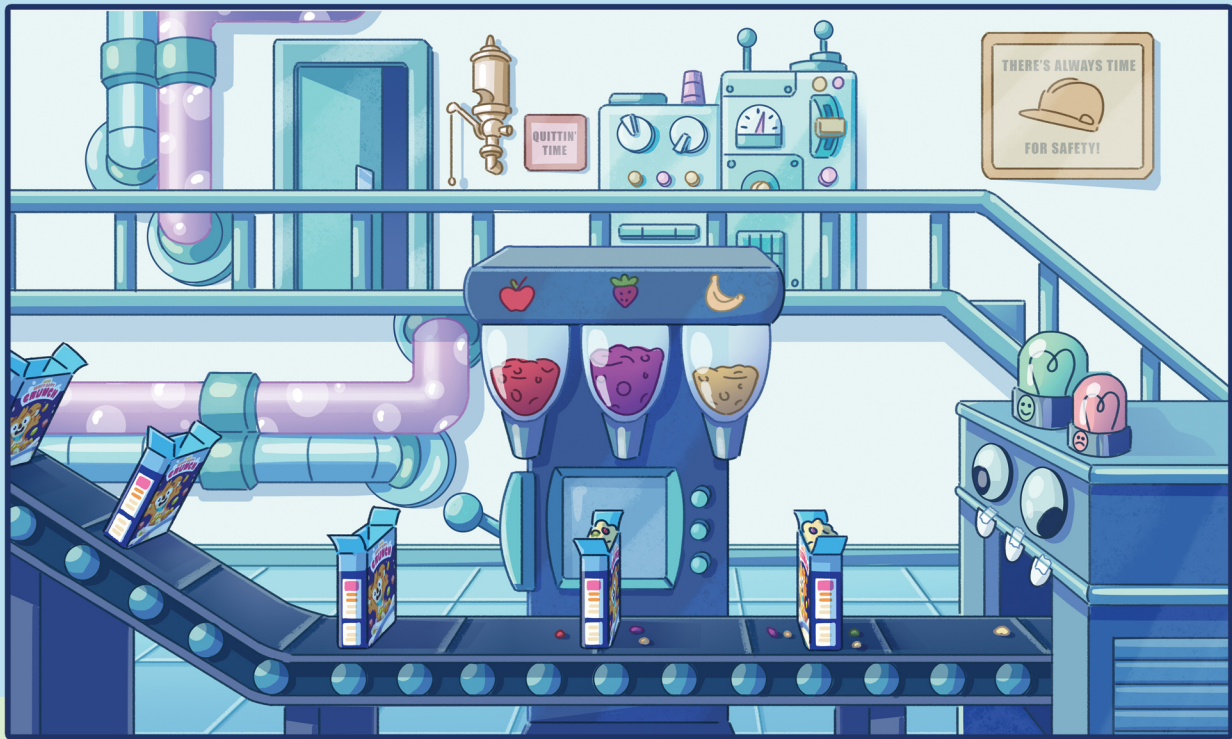
cereal factory

**Bailey's
Treehouse**

Living Area

There's industry in dis tree.







From Happy to Crappy

Bailey and Fridge live smack in the middle of Happy Place, but their stories will see them travel far and wide to new and exciting areas.

There's a lot of people who need help out there and there's a lot of work to do to get this place back to being happy again.

War has broken out between neighbouring villages.

Tech Towers are spying on people and spreading lies.

And the theme park is getting wayyy too expensive and making everyone download annoying and difficult to use apps!



Mr. Coltrane

Mr. Coltrane is many things, owner and founder of the cereal company, Bailey's manager, and a big yellow giraffe.

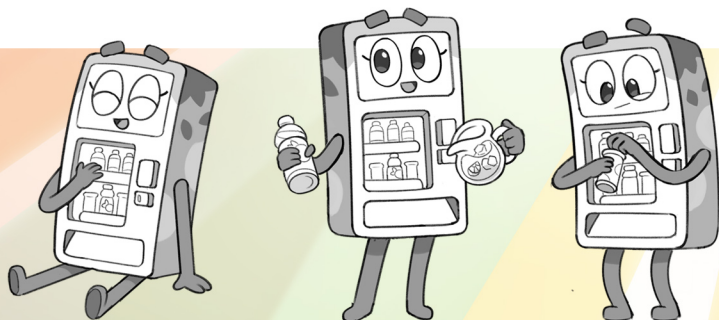
An armchair linguist, Mr. Coltrane is a lover of words and will endlessly read the dictionary for fun. With the world now experiencing a tidal wave of brand new negative emotions, Mr. Coltrane is in charge of creating new words to help define just what in the macrocosm is going on!

Quite often, Mr. Coltrane both figuratively and literally doesn't fit in to most social situations. Nevertheless, he'll kindly pop his head in through an open window to share his wisdom with Bailey and Fridge.

Melba

Melba is a Japanese-style vending machine who works freelance (she can literally set up shop anywhere). She's cool, confident, and as sweet as the beverages she dispenses.

Melba is endlessly fascinated - and somehow incredibly in touch with - the paranormal. And with all the new stuff going on in the world, she's able to offer up unconventional explanations for things. She's usually way off... but not always.





Coco Bro

Coco Bro is the antithesis of Bailey. He sees himself as her biggest rival and competitor for mascot superstardom.

His new cereal, Coco Bro's, is packed with “broteins” that'll supposedly make you super buff. Plus, each box comes with a Coco Coin (his pseudo-legal crypto currency).

Coco Bro is a boisterous douchenozzle who will do anything for notoriety. He's trailblazing a new path, fuelled by fame-at-all-costs.

Muffler

A chancer, grifter, scoundrel axolotl who should absolutely not be trusted.

Razzmatazz

A wise feline, thousands of years old, who understands the inner workings of the universe far better than most.





Marshmonkey

Marshmallow mascot. Genius inventor.

Broccolion

Mascot for Brock-O-Cookies, the healthy alternative to delicious cookies.

P.G.

Moody teen and local pizza guy.



Format

12 Episodes, 11 minutes long.

Individual episodes, with overarching storyline elements.

Themes

Each episode will incorporate a concept associated with happiness; the good, the bad, and the “it’s complicated” about life.

Some stories will be inspired by philosophical ideas and thought experiments, like The Experience Machine, Mary’s Room and The Trolley Problem.

With a dash of ‘understanding our place in universe’ with some real mind-bendy science.

And then there’s ‘Growing Up’. Bailey must adapt to her complicated new world, but can she do so while still holding on to her inner child? Can you be as happy as an adult as you were as a kid?

it’s a breakfast...
serial!



Chris Bennett

Chris earned his Degree in Animation with honors from Full Sail University in Orlando, Florida. In 2013 his web series 'Alfred & Poe' took off on YouTube and he partnered with pioneers of the platform 'Smosh' to create a wide range of animated content. In 2017 he joined Ludo Studio at the beginning of the 'Bluey' production, and has since served as an Animator, Lead-Animator, and Writer. He currently works as the Animation Director and Writer for 'Zip and the Tiny Sprouts', and will be joining the Bluey Movie very soon.

Chris is also...

a British-born Australian citizen, proud husband, father of two, animal enthusiast, environmentalist, Nintendo fan-boy, Simpsons binger, high-five expert, and of course... breakfast cereal connoisseur.

chrisanimations@me.com
+61427776585

